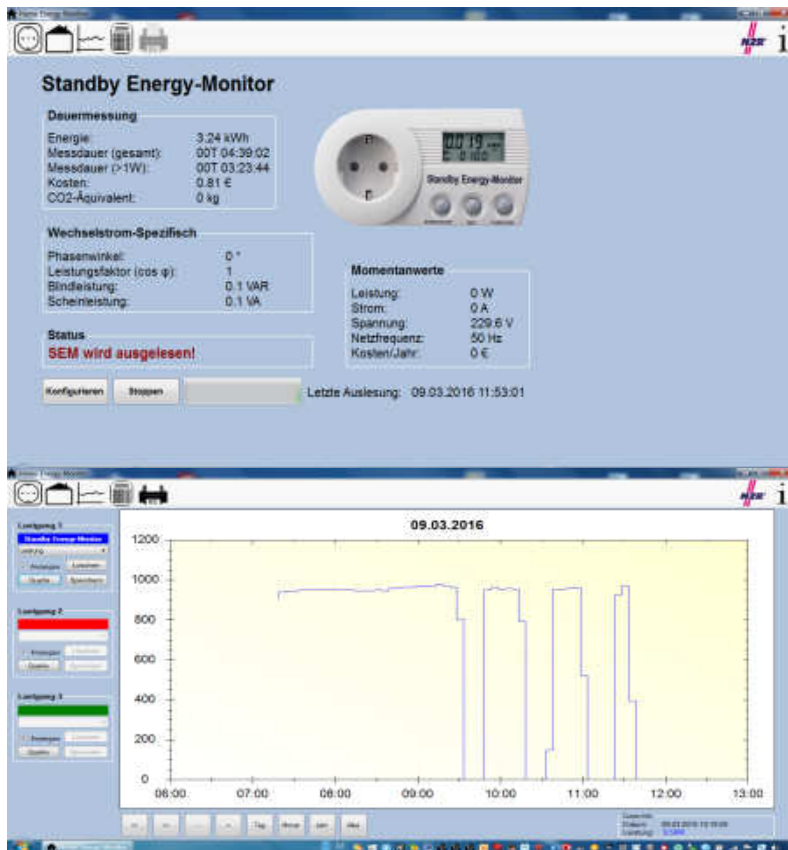


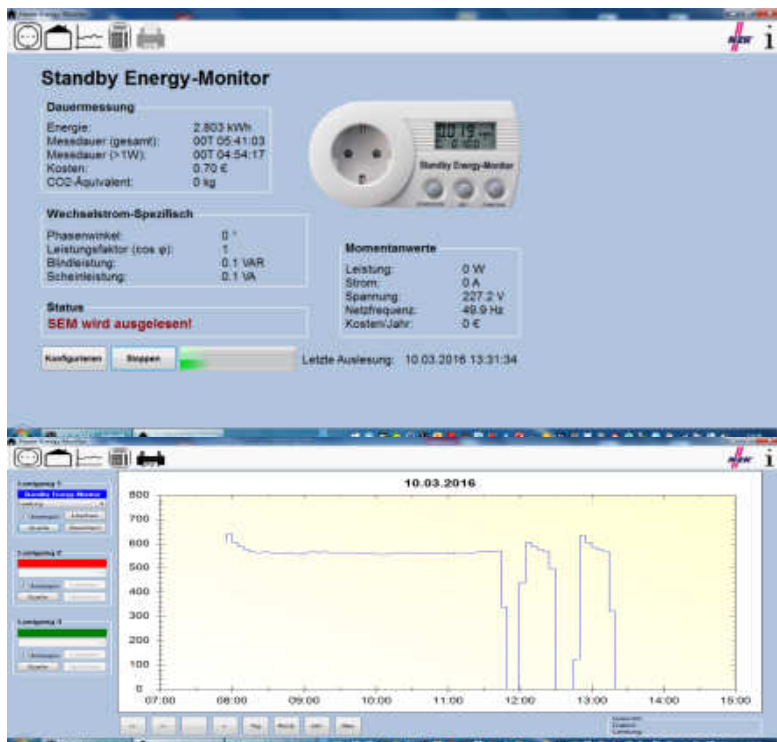
Heizlüfter Messung 09.03.2016



Messdauer 3.40 h $\hat{=}$ 3,24 kWh

Energieverbrauch in 4.0 h $\hat{=}$ 3.82 kWh

InfraPlus Messung 10.03.2016



Messdauer 4.90 h $\hat{=}$ 2,83 kWh

Energieverbrauch in 4.0 h $\hat{=}$ 1.7 kWh

Aussentemperatur Differenz (Annahme) + 10% $\hat{=}$ 1. 87 kWh

Stromeinsparung gegenüber Heizlüfter = 49%